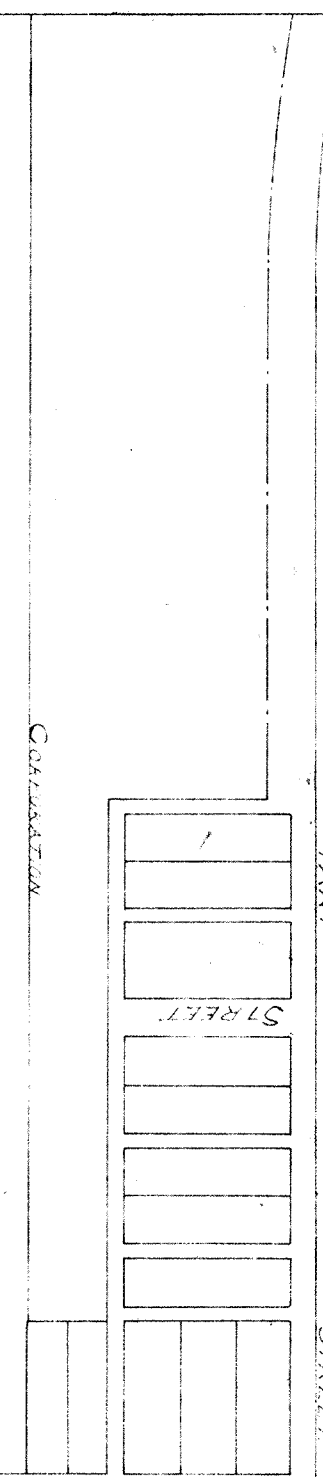


CAIRO

FRIDERIC ASTAETTER
 Area Acquired 7 1/2 Acres
 3 1/2 Dec 29 - 7p 2.5 - R-7E

AS. D. BRENNEMAN
 Area Acquired 1 1/2 Acres
 5 1/2 Dec 29 - 7p 2.5 - R-7E

WIRTH & FAUST
 Area Acquired 2 1/2 Acres
 NW 1/4 of NE 1/4 Sec 29 - 7p 2.5 - R-7E



Alfred Snyder (B)

Area Acquired 0 1/2 Acres
 NW 1/4 Sec 29

Area Acquired 0 1/2 Acres
 NW 1/4 Sec 29

Area Acquired 0 1/2 Acres
 NW 1/4 Sec 29

Area Acquired 0 1/2 Acres
 NW 1/4 Sec 29

Area Acquired 0 1/2 Acres
 NW 1/4 Sec 29

Area Acquired 0 1/2 Acres
 NW 1/4 Sec 29

Area Acquired 0 1/2 Acres
 NW 1/4 Sec 29

Area Acquired 0 1/2 Acres
 NW 1/4 Sec 29

Area Acquired 0 1/2 Acres
 NW 1/4 Sec 29

Area Acquired 0 1/2 Acres
 NW 1/4 Sec 29

Area Acquired 0 1/2 Acres
 NW 1/4 Sec 29

Area Acquired 0 1/2 Acres
 NW 1/4 Sec 29

Area Acquired 0 1/2 Acres
 NW 1/4 Sec 29

Area Acquired 0 1/2 Acres
 NW 1/4 Sec 29

Area Acquired 0 1/2 Acres
 NW 1/4 Sec 29

Area Acquired 0 1/2 Acres
 NW 1/4 Sec 29

Area Acquired 0 1/2 Acres
 NW 1/4 Sec 29

Area Acquired 0 1/2 Acres
 NW 1/4 Sec 29

Area Acquired 0 1/2 Acres
 NW 1/4 Sec 29

Area Acquired 0 1/2 Acres
 NW 1/4 Sec 29

Area Acquired 0 1/2 Acres
 NW 1/4 Sec 29

Area Acquired 0 1/2 Acres
 NW 1/4 Sec 29

Area Acquired 0 1/2 Acres
 NW 1/4 Sec 29

Area Acquired 0 1/2 Acres
 NW 1/4 Sec 29

Area Acquired 0 1/2 Acres
 NW 1/4 Sec 29

Area Acquired 0 1/2 Acres
 NW 1/4 Sec 29

Area Acquired 0 1/2 Acres
 NW 1/4 Sec 29

Area Acquired 0 1/2 Acres
 NW 1/4 Sec 29

Area Acquired 0 1/2 Acres
 NW 1/4 Sec 29

Area Acquired 0 1/2 Acres
 NW 1/4 Sec 29

Area Acquired 0 1/2 Acres
 NW 1/4 Sec 29

Area Acquired 0 1/2 Acres
 NW 1/4 Sec 29

Area Acquired 0 1/2 Acres
 NW 1/4 Sec 29

Area Acquired 0 1/2 Acres
 NW 1/4 Sec 29

Area Acquired 0 1/2 Acres
 NW 1/4 Sec 29

Area Acquired 0 1/2 Acres
 NW 1/4 Sec 29

Area Acquired 0 1/2 Acres
 NW 1/4 Sec 29

Area Acquired 0 1/2 Acres
 NW 1/4 Sec 29

Area Acquired 0 1/2 Acres
 NW 1/4 Sec 29

Area Acquired 0 1/2 Acres
 NW 1/4 Sec 29

Area Acquired 0 1/2 Acres
 NW 1/4 Sec 29

Area Acquired 0 1/2 Acres
 NW 1/4 Sec 29

Area Acquired 0 1/2 Acres
 NW 1/4 Sec 29

Area Acquired 0 1/2 Acres
 NW 1/4 Sec 29

Area Acquired 0 1/2 Acres
 NW 1/4 Sec 29

Area Acquired 0 1/2 Acres
 NW 1/4 Sec 29

Area Acquired 0 1/2 Acres
 NW 1/4 Sec 29

Area Acquired 0 1/2 Acres
 NW 1/4 Sec 29

Area Acquired 0 1/2 Acres
 NW 1/4 Sec 29

Area Acquired 0 1/2 Acres
 NW 1/4 Sec 29



CAIRO

FRIDERIC ASTAETTER
 Area Acquired 7 1/2 Acres
 3 1/2 Dec 29 - 7p 2.5 - R-7E

AS. D. BRENNEMAN
 Area Acquired 1 1/2 Acres
 5 1/2 Dec 29 - 7p 2.5 - R-7E

WIRTH & FAUST
 Area Acquired 2 1/2 Acres
 NW 1/4 of NE 1/4 Sec 29 - 7p 2.5 - R-7E

THE LIMA & TOLEDO TRACTION CO
 OFFICE OF CH ENGR
 LIMA, O

Right of Way Acquired Through CAIRO, O
 Sept 28-06
 Scale 1" = 200'

EVAN J. THOMAS

N. R. Line from S. R. 7p 2.5 - R-7E
 26'-24" 7p 2.5 - R-7E

13

23